

CORPORATE STRUCTURE

PUBLIC COUNTY COUNCIL

COUNTY COMMISSIONER

implements the policies and strategic plans of the Mayor and Council, provides professional advice and recommendations to the Mayor and Council, and oversees the day-to-day management of the County's operations.

Corporate Services

provides support services to the county by using the policies, resources and plans established by Council through the following departments.

Administration

creates a supportive, healthy, comfortable office environment by ensuring office space is designed and renewed to address occupancy needs, as well as provides support to County Council and staff, ensuring legislative regulations are followed and information is delivered in a timely and accurate fashion.

Assessment

completes an annual valuation of all properties within Sturgeon County that will be used as a basis for property tax revenue.

Community and Corporate Communications

increases resident and employee understanding, awareness of, and participation in County programs, projects, events and services, by communicating through publications, marketing campaigns and the media.

Finance

tracks, reports and forecasts the county's financial activities. In addition, the Finance department facilitates the efficient use of computing technology and geographic information system information.

Human Resources

delivers services to existing and potential employees. Through the development of human resource practices and programs HR establishes a preferred work environment to attract, retain and motivate employees, and ensures a healthy and safe work environment for employees, volunteers and visitors at all County work sites.

Infrastructure Services

oversees agricultural concerns as well as creates a long term (10-year) plan for the development of the transportation and utility network within the County.

Engineering Services

provides Utilities Services including the planning and operation of all municipal water and wastewater systems according to current standards, practices and applicable codes, Engineering Services for the design and construction of County roads, utilities and storm water infrastructure, and Development Services for the planning and inspection of subdivisions.

Fleet Maintenance Services

provides cost effective preventative maintenance and repair support to Sturgeon County's fleet of vehicles and equipment. Equipment maintenance additionally ensures that vehicles and equipment are available for use when required.

Transportation Services

provides a safe and efficient transportation network to move Sturgeon's people and goods.

Public Services

assists with and facilitates management of the County by providing policy recommendation, strategic planning issue resolutions.

Agriculture Services

promotes, enhances and protects viable and sustainable agriculture, by providing advice on direct weed and pest control and soil and water conservation programs.

Community Services

ensures that Sturgeon County residents have local access to excellent programs, facilities and individual/family development support opportunities through information and education.

Economic Development

pursues business opportunities and promotes Sturgeon County, while fostering the balance between growth and quality of life.

Planning & Development

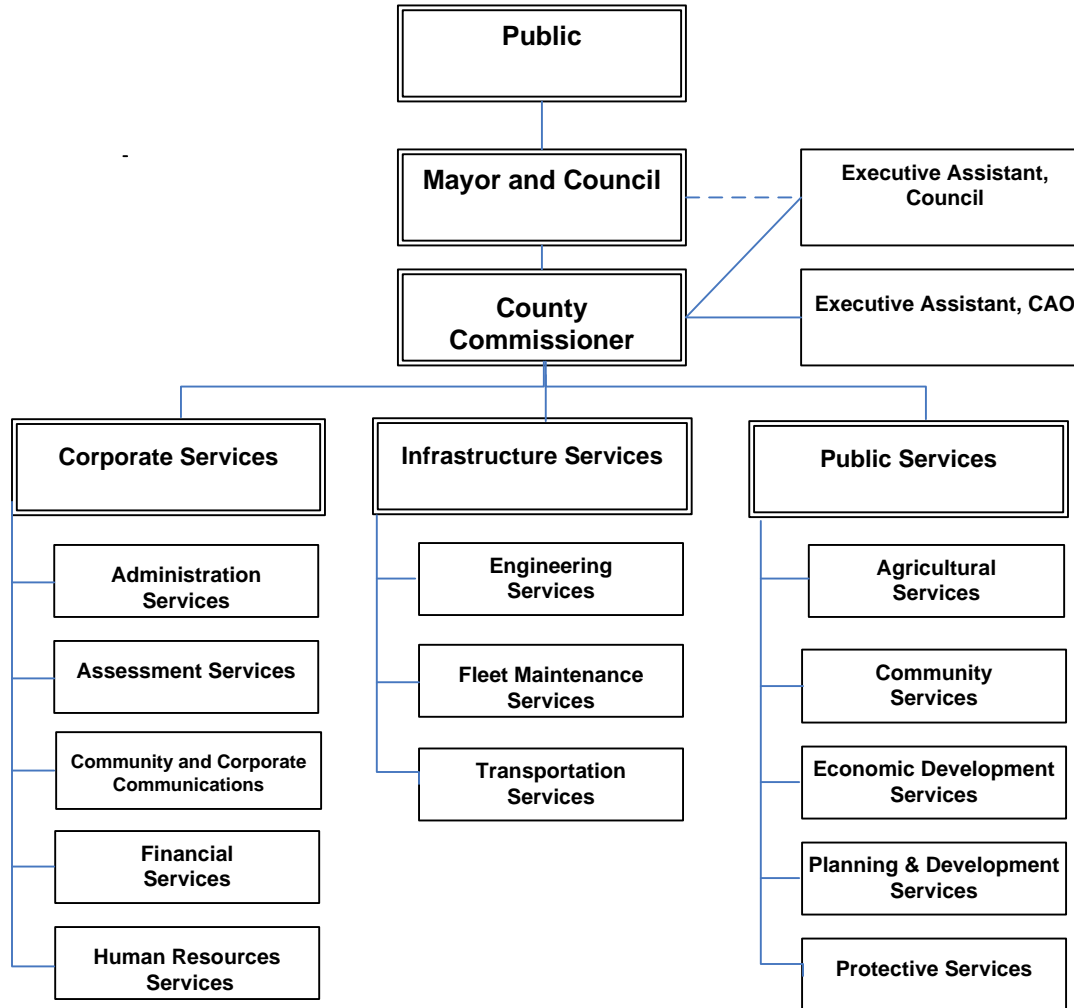
plays a strategic role in creating, maintaining and implementing policies and regulations.

Protective Services

protects life and property of county residents, by aggressively and safely providing emergency and enforcement services.



Organization Structure Chart



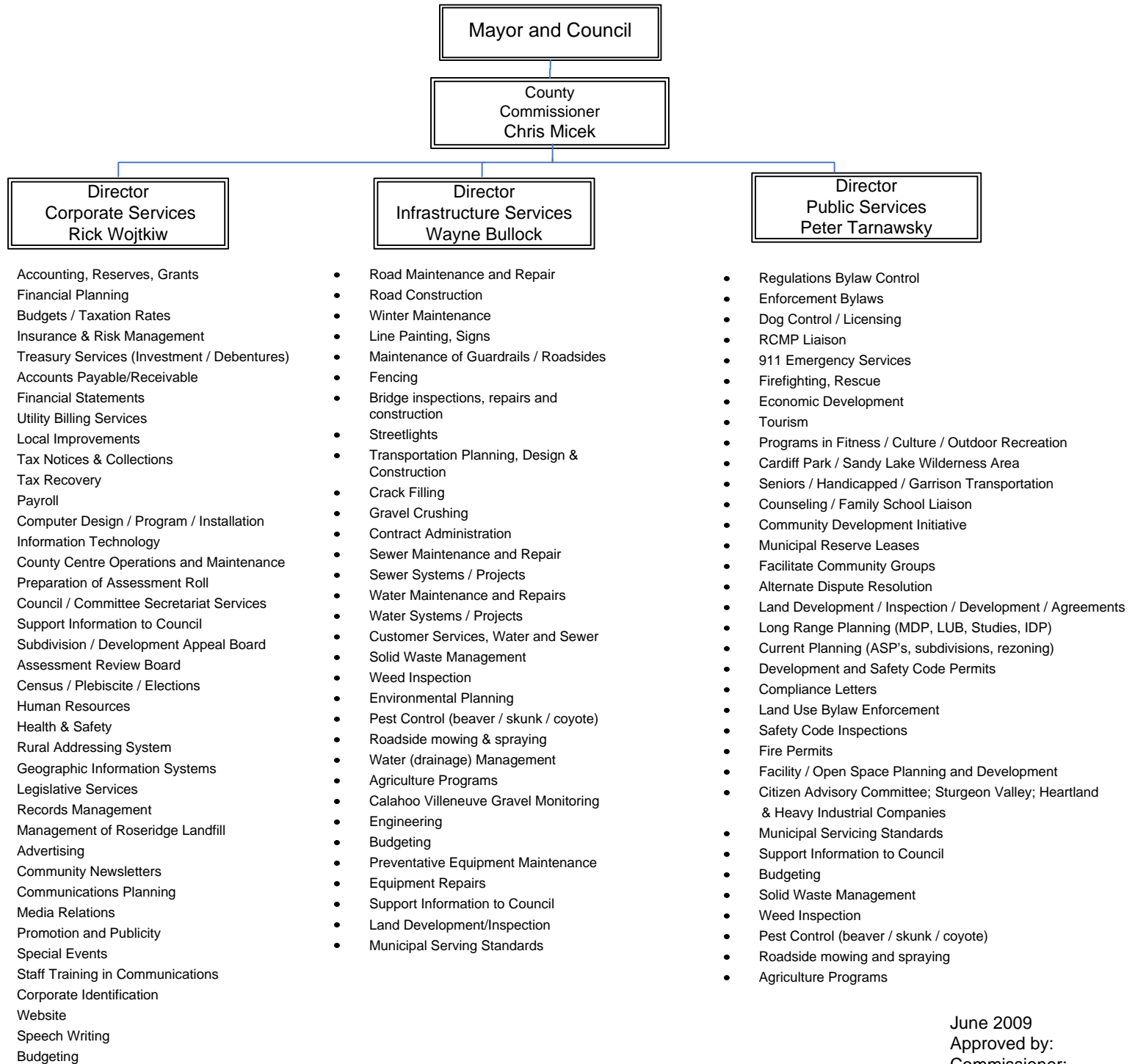
Commissioner and Council	2.55
Corporate Services	33.66
Infrastructure Services	71.82
Public Services	<u>53.98</u>
Total F.T.E	162.01

June 2009

Approved by: Commissioner: _____

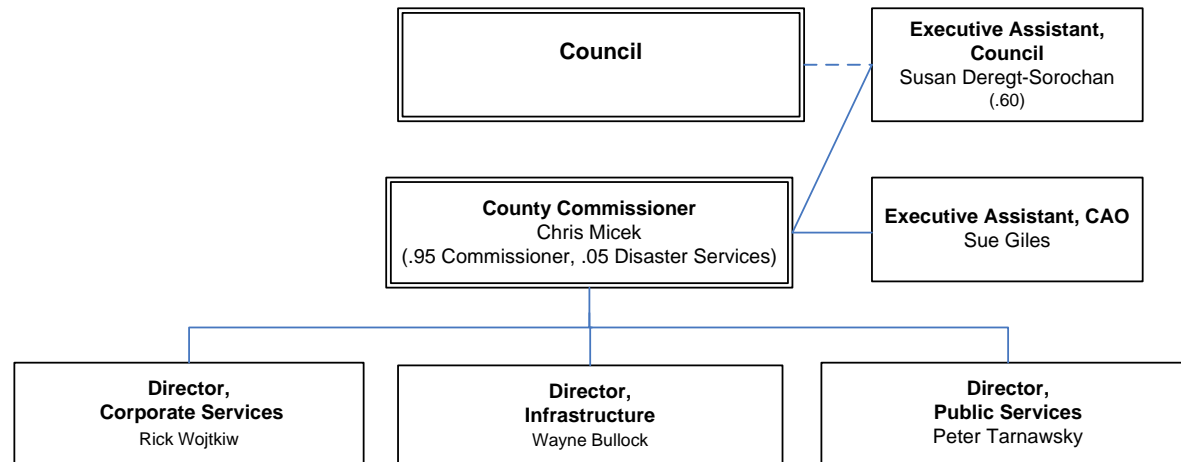


Functional Organization Chart





County Commissioner

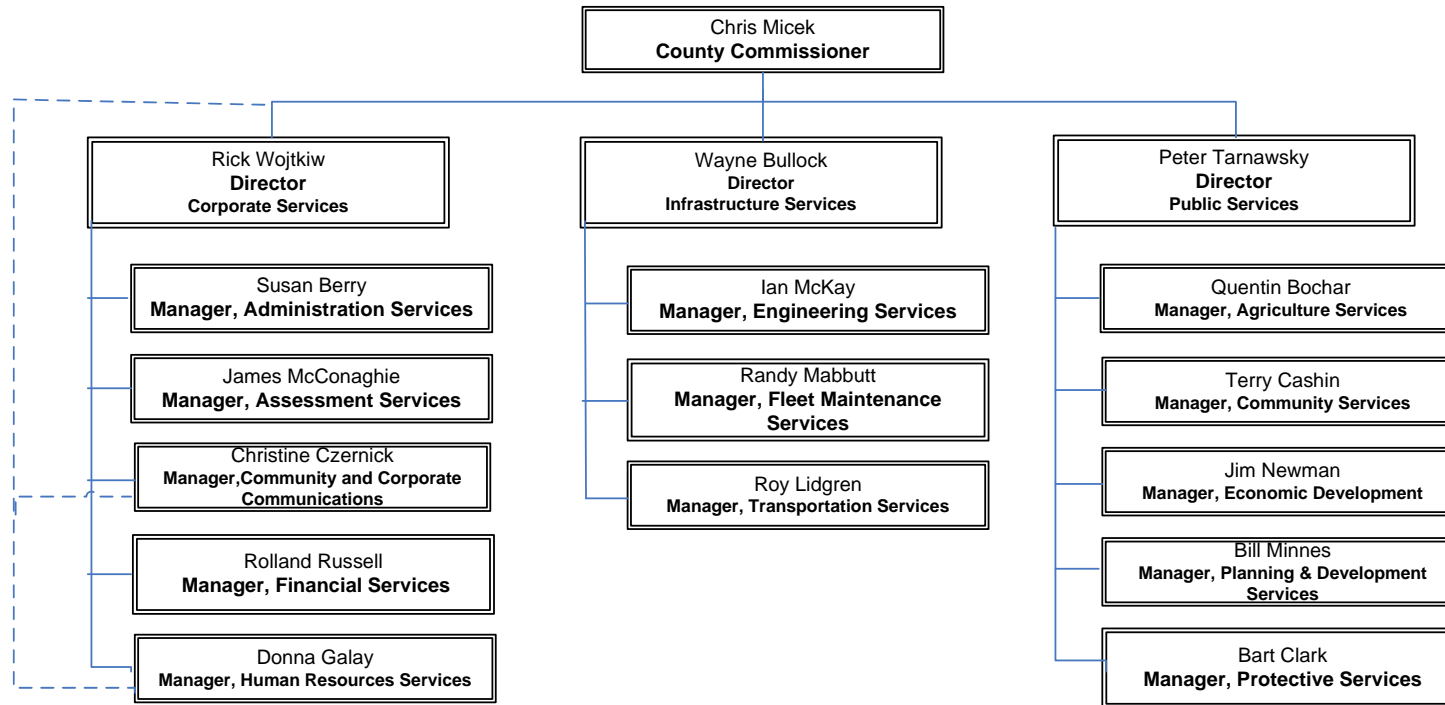


Council	.60
County Commissioner	<u>1.95</u>
Total F.T.E.	2.55

June 2009
 Approved by Commissioner: _____



Senior Management and Managers

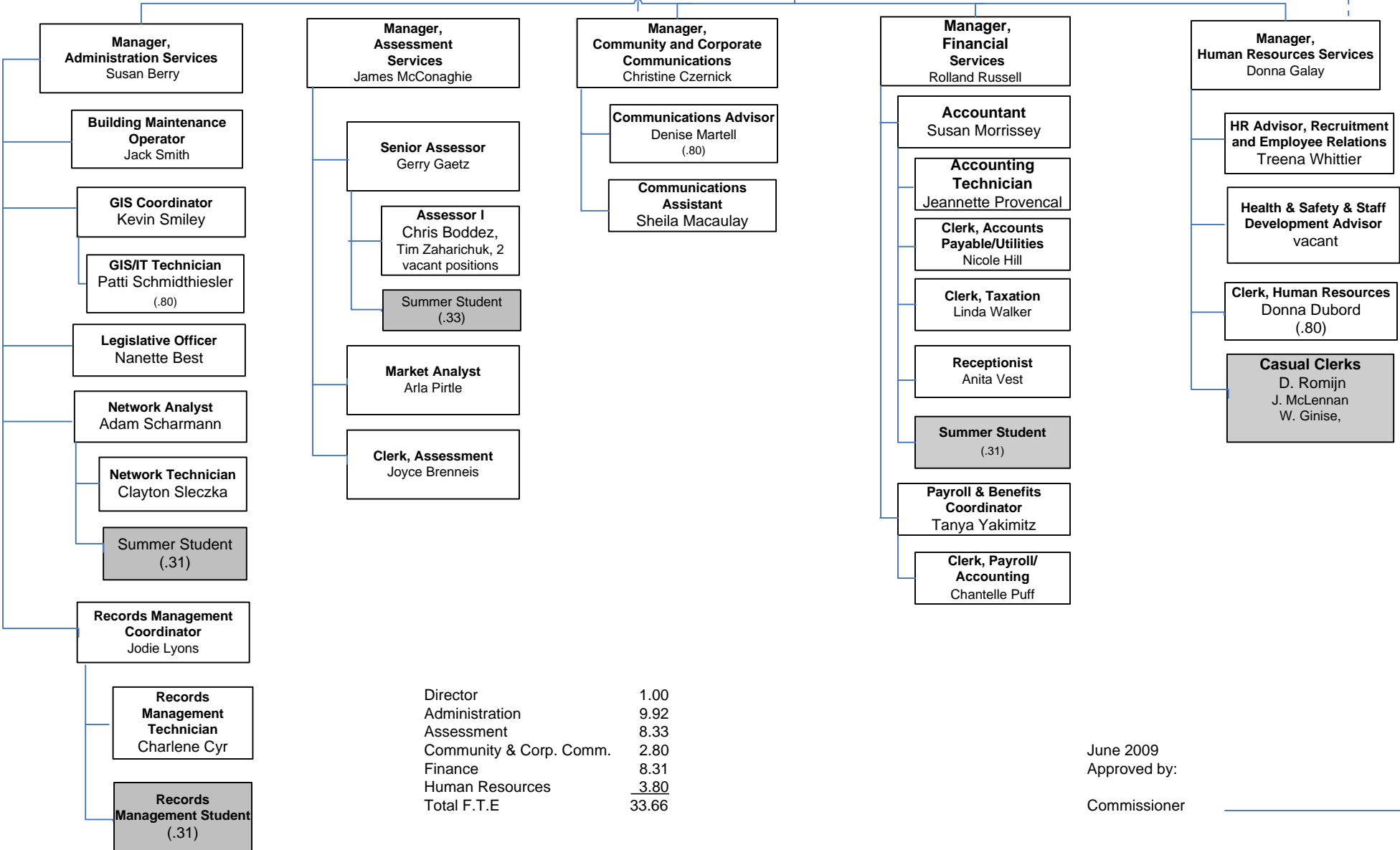
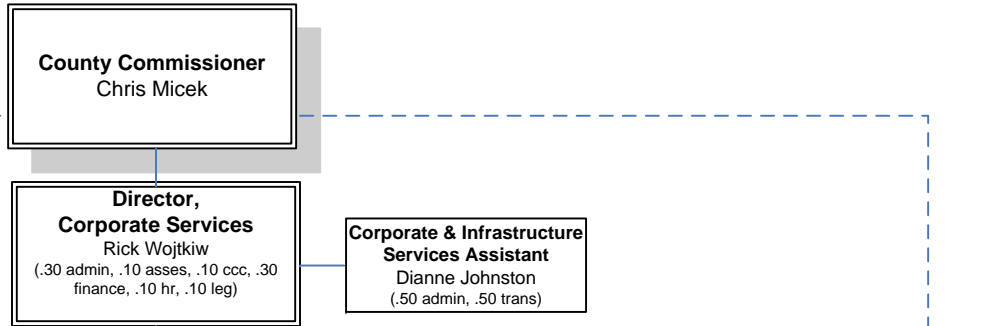


July 2009

Approved by Commissioner: _____



Corporate Services Directorate



Director	1.00
Administration	9.92
Assessment	8.33
Community & Corp. Comm.	2.80
Finance	8.31
Human Resources	<u>3.80</u>
Total F.T.E	33.66

June 2009
Approved by:

Commissioner _____

Director _____

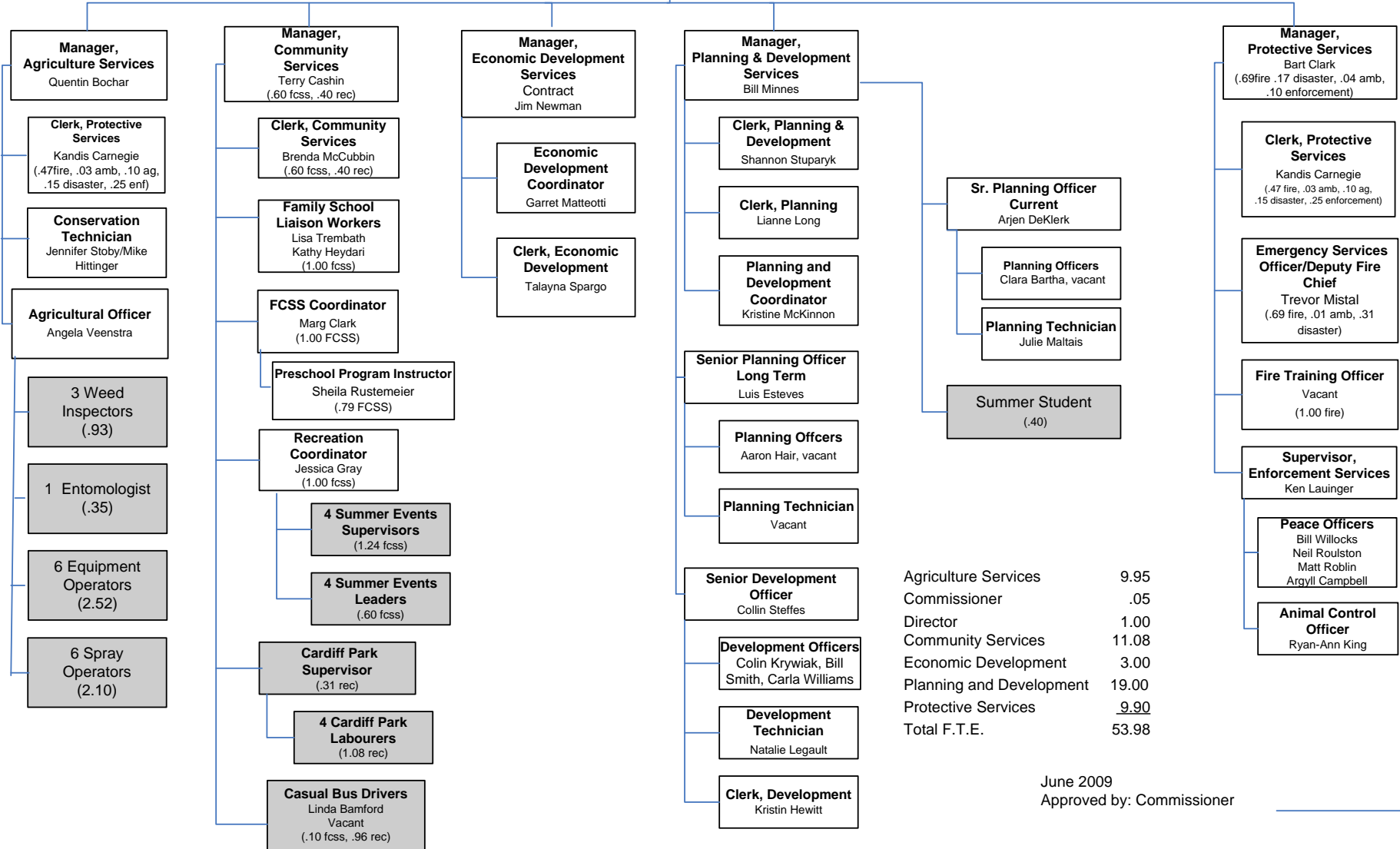


Public Services Directorate

County Commissioner
Chris Micek
(.05 Disaster, .95 county commissioner)

Director, Public Services
Peter Tarnawsky
(.03 fcscs, .02 rec, .15 fire, .15 enforcement, .35 p&d svcs, .20 ec dev, .10 ag)

Clerk, Public Services
Roxane Coursaux
(.60 p&d)



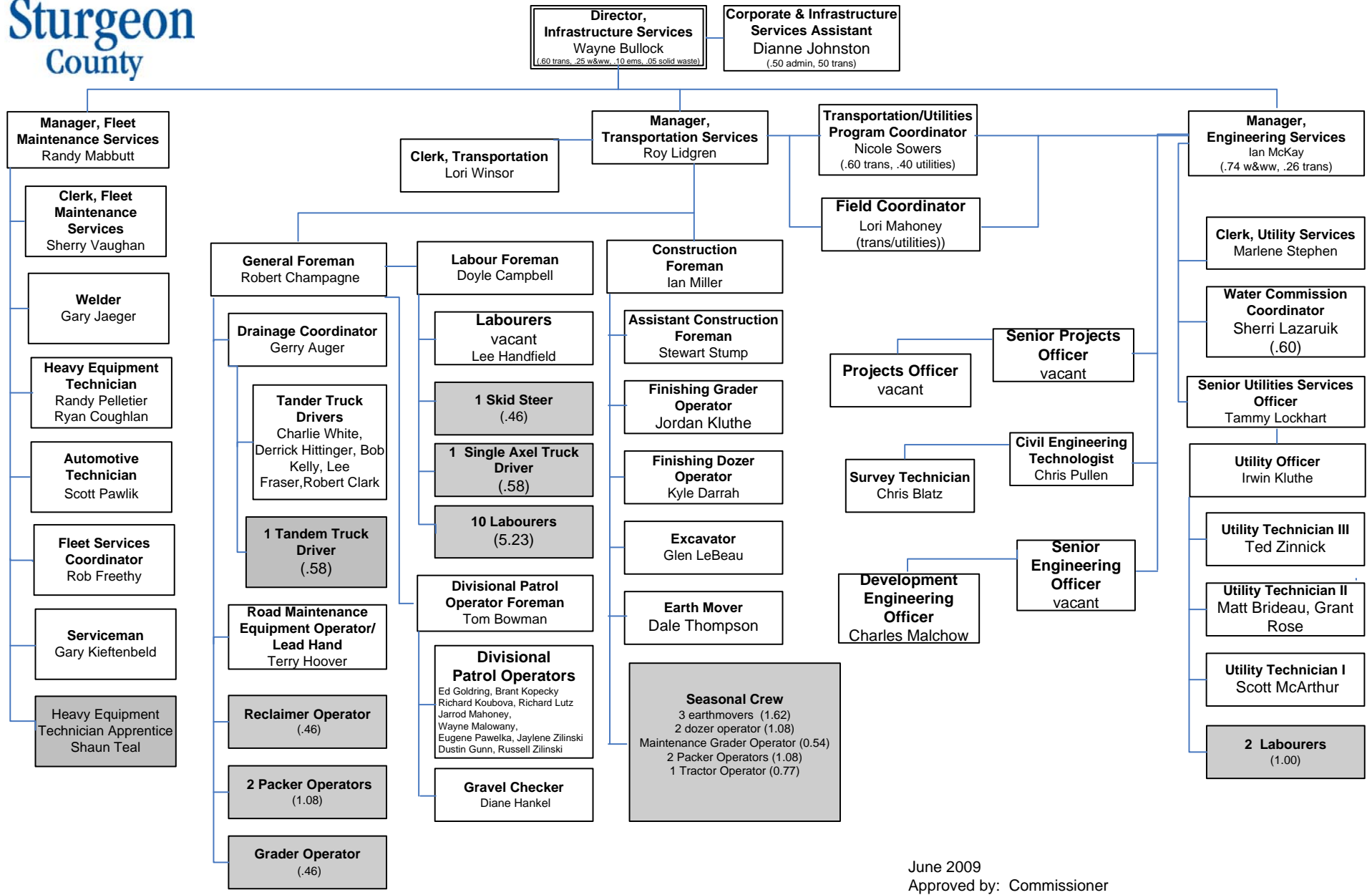
Agriculture Services	9.95
Commissioner	.05
Director	1.00
Community Services	11.08
Economic Development	3.00
Planning and Development	19.00
Protective Services	9.90
Total F.T.E.	53.98

June 2009
Approved by: Commissioner

Director



Infrastructure Services Directorate



June 2009
Approved by: Commissioner

Director	1.00
Equipment Maintenance Services	8.83
Transportation	47.04
Engineering Services	<u>14.95</u>
Total F.T.E	71.82

Director